

## The Best Hoods Can Fail Why Installation is Everything

### Categories

- Ventilation

Even the best range hood won't perform if it's installed poorly. Ducting that's too small, too long, or made of flexible material can slash performance in half, while mounting errors and improper venting can lead to noise, grease buildup, and even safety hazards. For high-powered hoods, makeup air is critical to prevent airflow imbalance—making installation just as important as the hood itself.

## KEY TAKEAWAYS

### ***CFM ISN'T EVERYTHING***

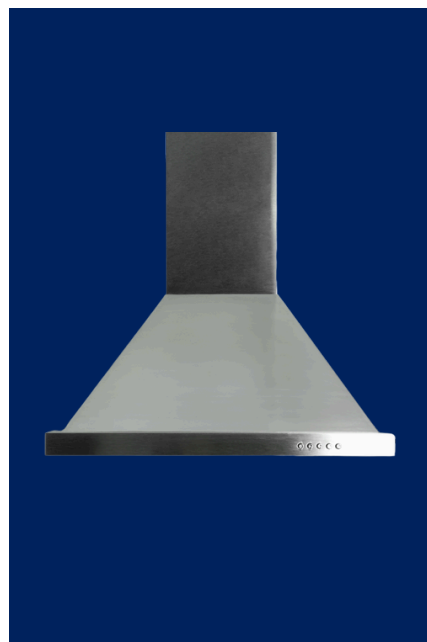
Without proper sizing and airflow control, even a high-powered hood won't perform well.

### ***FILTERS DRIVE REAL RESULTS***

Dirty or inefficient filters kill airflow and leave grease and odors behind.

### ***SIZE AND PLACEMENT MATTER***

A hood that's too small or mounted too high won't capture smoke—no matter the power.



## WATCH HERE

<https://tv.steelcod.com/p/best-hood-can-fail>